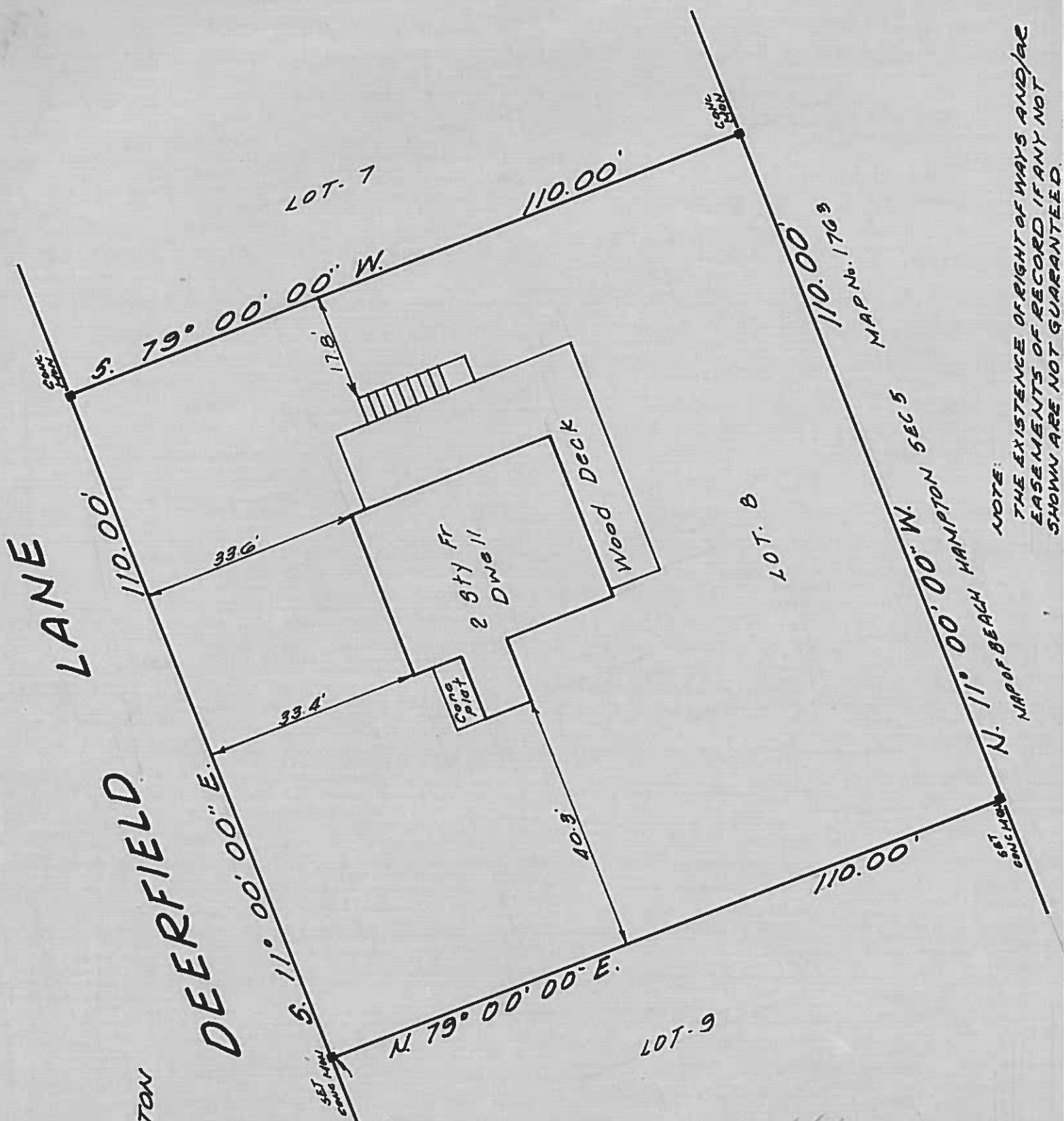


MAP OF LOT. 8
 HAMPTON DUNES
 FILED AUG 17, 1966 MAP No. 4694
 SITUATE
 AMAGANSETT TOWN OF EAST HAMPTON
 SUFFOLK COUNTY, N.Y.
 SCALE: 1" = 20'



CENTRAL AVENUE

Redated April 19, 1972
 SURVEYED AUG 17, 1971
 by *George H. Walbridge Co.*
GEORGE H. WALBRIDGE CO.
 LAND SURVEYORS AND LAND PLANNERS
 SUCCESSOR TO MELVILLE C. WOOD
 EAST HAMPTON, N.Y.

NOTE:
 THE EXISTENCE OF RIGHT OF WAYS AND/OR
 EASEMENTS OF RECORD IF ANY NOT
 SHOWN ARE NOT GUARANTEED.