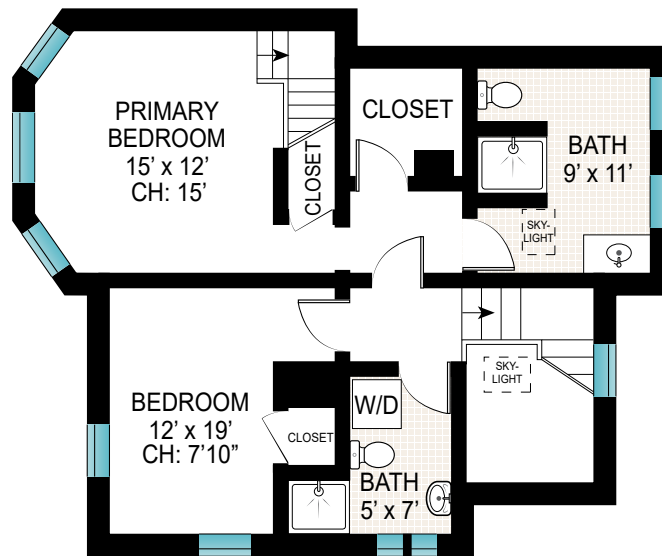
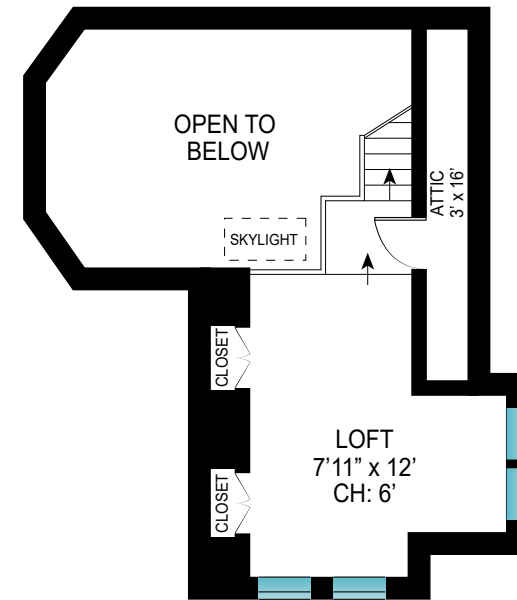




FIRST FLOOR
CEILING HEIGHT : 8'

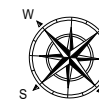


SECOND FLOOR
CEILING HEIGHT : 7'10"



LOFT
CEILING HEIGHT : 6'

FIRST FLOOR INT: 900 SQFT
SECOND FLOOR INT: 600 SQFT
LOFT: 200 SQFT
TOTAL INT: 1,700 SQFT



Scale in feet. Indicative only. Dimensions are approximate. All information contained herein is gathered from sources we believe to be reliable. However, we cannot guarantee its accuracy and interested persons should rely on their own inquiries.

85 Post Crossing, Southampton

Sotheby's
INTERNATIONAL REALTY