

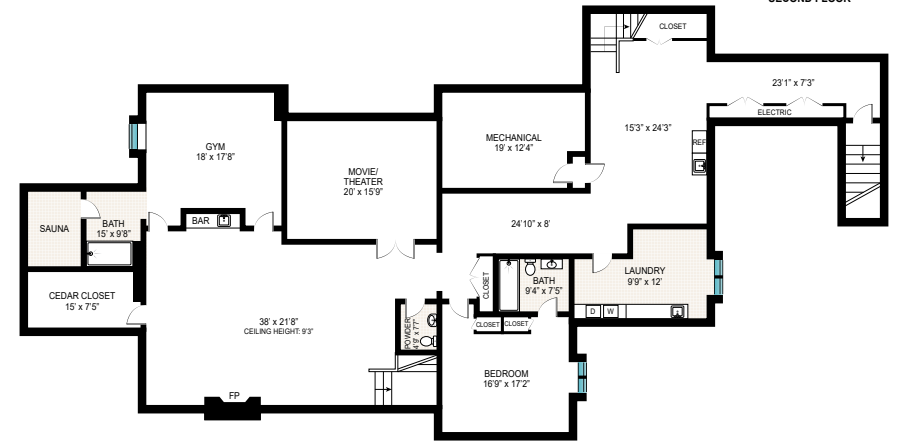
FIRST FLOOR
CEILING HEIGHT: 10'



SECOND FLOOR
CEILING HEIGHT: 13'3"



SECOND FLOOR



LOWER LEVEL
CEILING HEIGHT: 9'3"

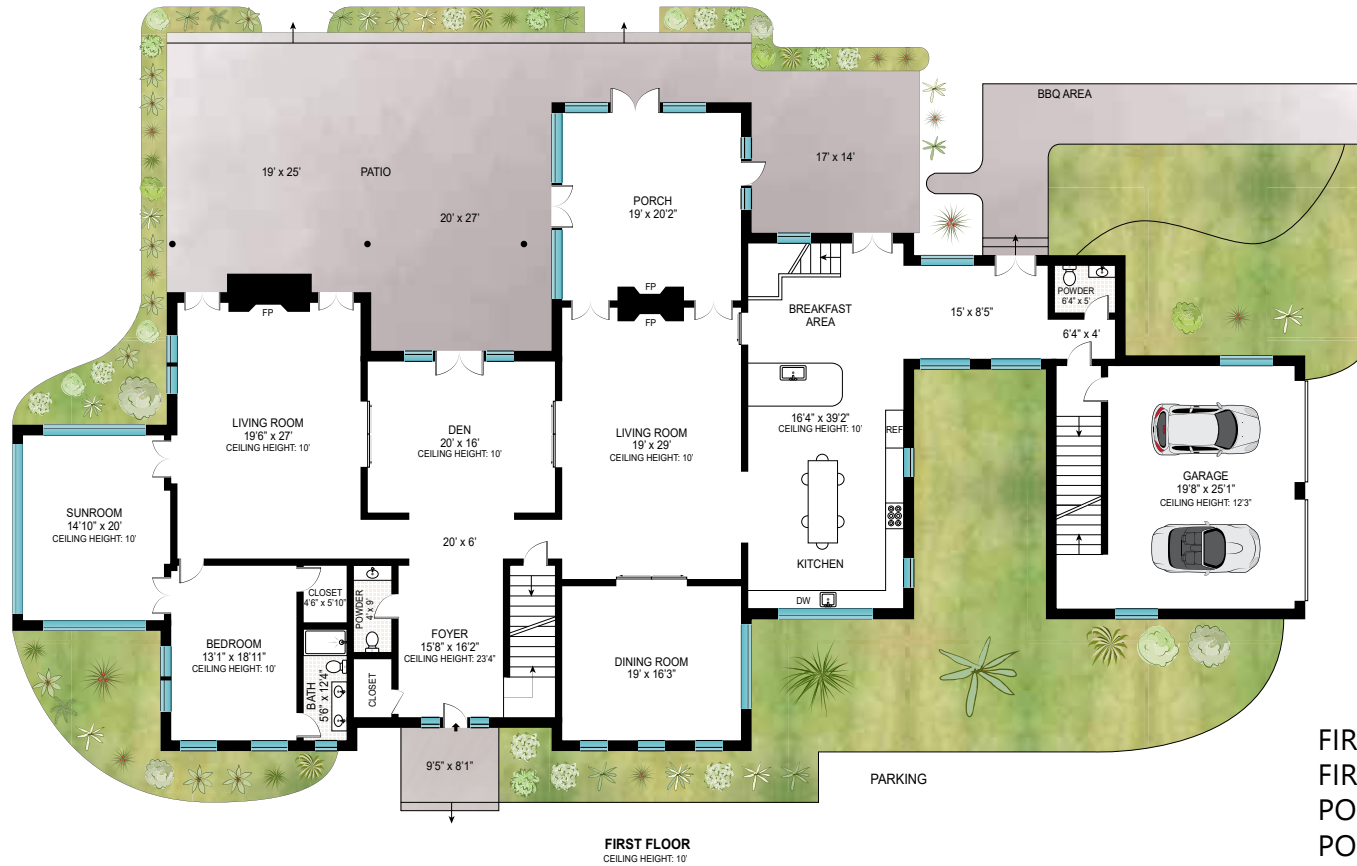
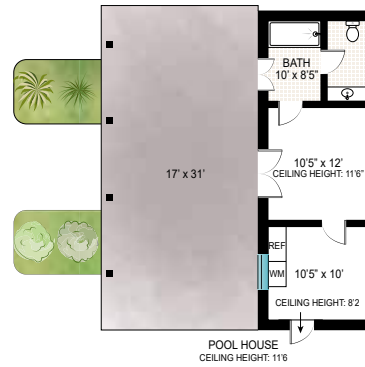
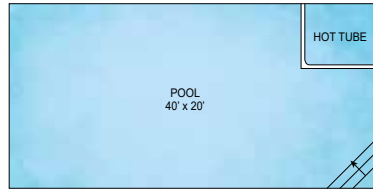
FIRST FLOOR INT: 3924 SQ FT
 FIRST FLOOR OUT: 1325 SQ FT
 SECOND FLOOR INT: 3495 SQ FT
 SECOND FLOOR OUT: 494 SQ FT
 LOWER LEVEL: 2581 SQ FT

POOL: 800 SQ FT
 POOL HOUSE: 325 SQ FT
 GARAGE: 643 SQ FT
 TOTAL INT: 10968 SQ FT
 TOTAL OUT: 2619 SQ FT
 TOTAL: 13587 SQ FT

Scale in feet. Indicative only. Dimensions are approximate. All information contained herein is gathered from sources we believe to be reliable. However, we cannot guarantee its accuracy and interested persons should rely on their own inquiries.

173 Davids Lane, Water Mill

Sotheby's
INTERNATIONAL REALTY



FIRST FLOOR INT: 3924 SQ FT
 FIRST FLOOR OUT: 1325 SQ FT
 POOL: 800 SQ FT
 POOL HOUSE: 325 SQ FT
 GARAGE: 643 SQ FT

Scale in feet. Indicative only. Dimensions are approximate. All information contained herein is gathered from sources we believe to be reliable. However, we cannot guarantee its accuracy and interested persons should rely on their own inquiries.

173 Davids Lane, Water Mill

Sotheby's
INTERNATIONAL REALTY

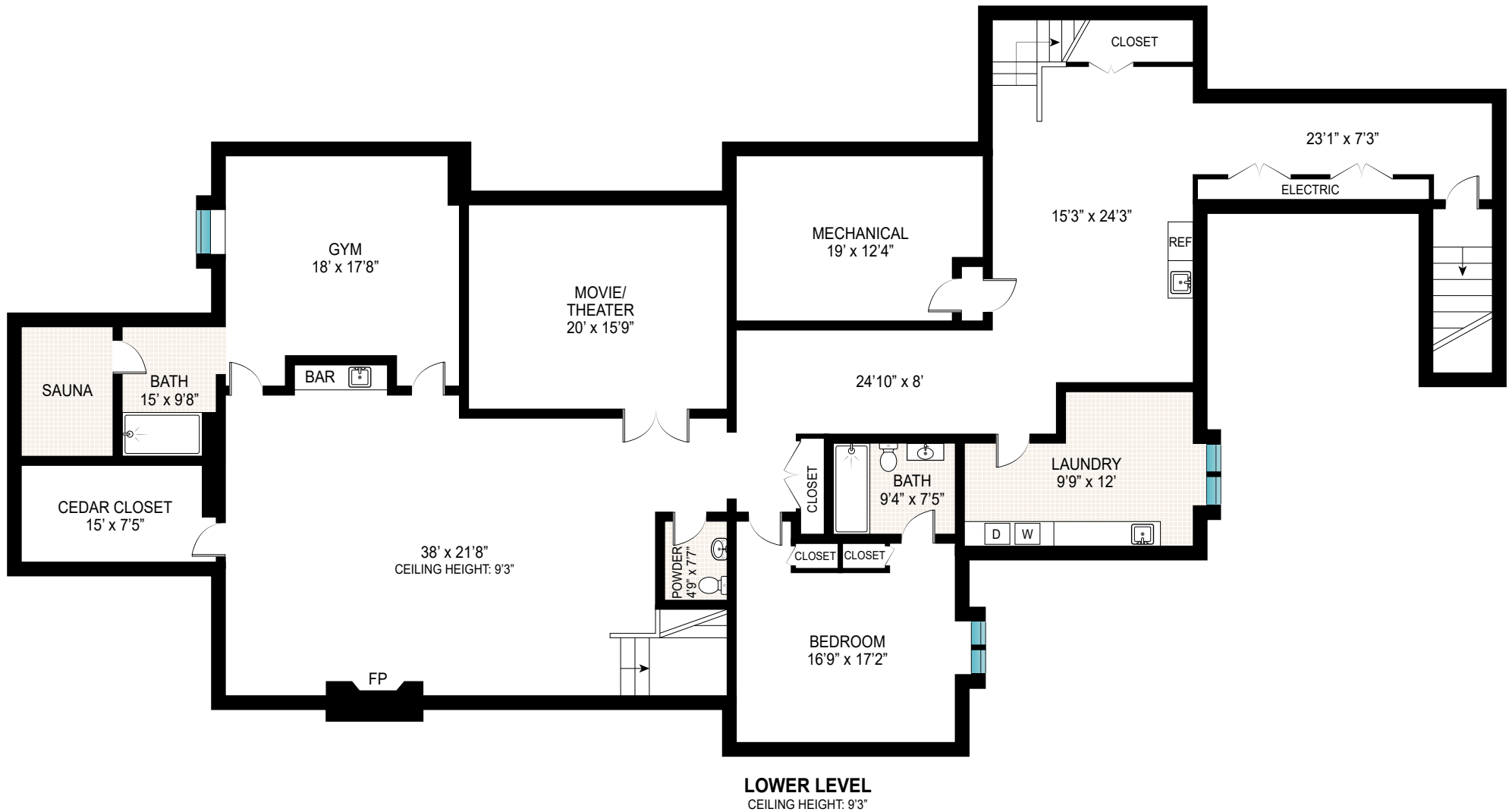


SECOND FLOOR INT: 3495 SQ FT
 SECOND FLOOR OUT: 494 SQ FT

Scale in feet. Indicative only. Dimensions are approximate. All information contained herein is gathered from sources we believe to be reliable. However, we cannot guarantee its accuracy and interested persons should rely on their own inquiries.

173 Davids Lane, Water Mill

Sotheby's
 INTERNATIONAL REALTY



LOWER LEVEL: 2581 SQ FT

Scale in feet. Indicative only. Dimensions are approximate. All information contained herein is gathered from sources we believe to be reliable. However, we cannot guarantee its accuracy and interested persons should rely on their own inquiries.

173 Davids Lane, Water Mill

Sotheby's
INTERNATIONAL REALTY