



FIRST FLOOR INT: 1300 SQFT
 FIRST FLOOR OUT: 1600 SQFT
 SECOND FLOOR INT: 1369 SQFT
 SECOND FLOOR OUT: 690 SQFT
 LOWER LEVEL: 1831 SQFT
 POOL: 800 SQFT
 TOTAL INT: 4500 SQFT
 TOTAL OUT: 3090 SQFT
 TOTAL: 7590 SQFT



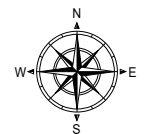
Scale in feet. Indicative only. Dimensions are approximate. All information contained herein is gathered from sources we believe to be reliable. However, we cannot guarantee its accuracy and interested persons should rely on their own inquiries.

36 Bay Inlet Road, East Hampton

Sotheby's
INTERNATIONAL REALTY



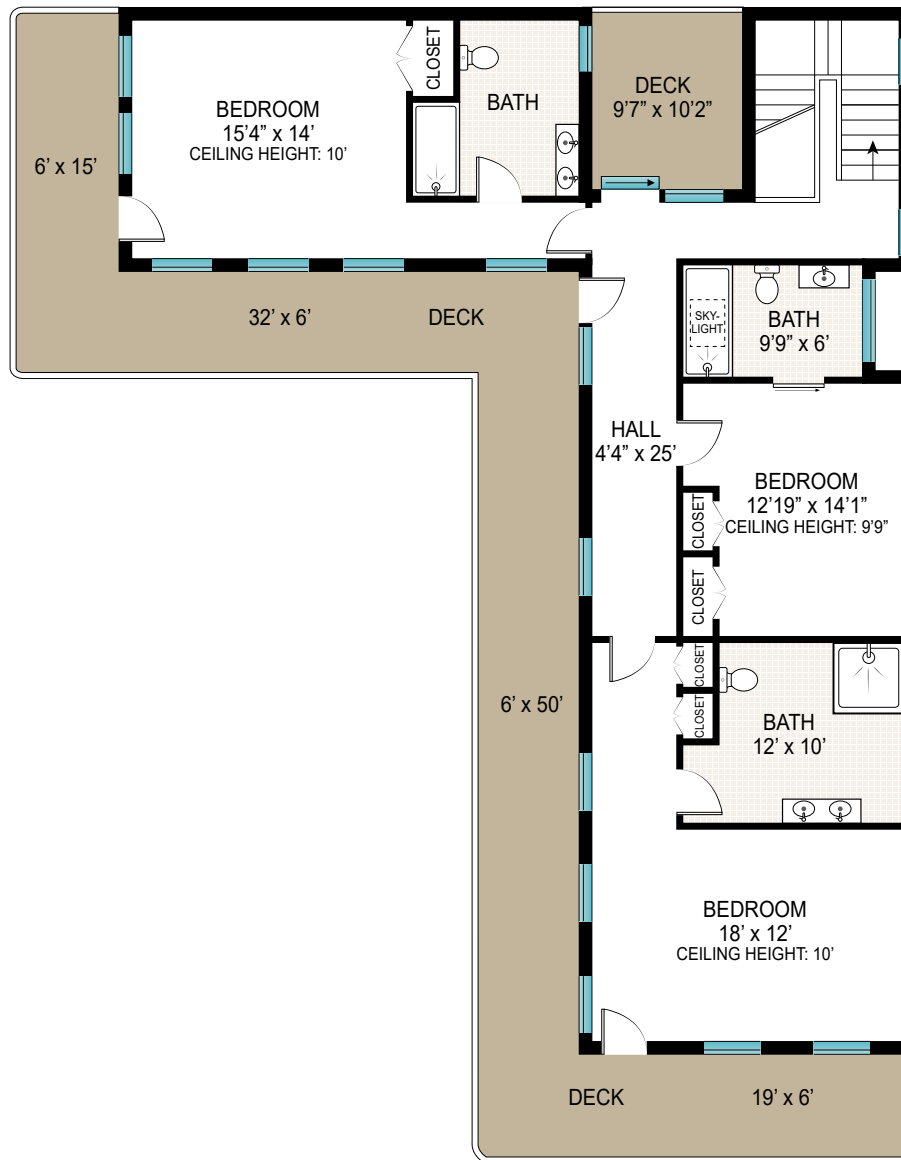
FIRST FLOOR INT: 1300 SQFT
 FIRST FLOOR OUT: 1600 SQFT
 POOL: 800 SQFT



Scale in feet. Indicative only. Dimensions are approximate. All information contained herein is gathered from sources we believe to be reliable. However, we cannot guarantee its accuracy and interested persons should rely on their own inquiries.

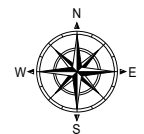
36 Bay Inlet Road, East Hampton

Sotheby's
 INTERNATIONAL REALTY



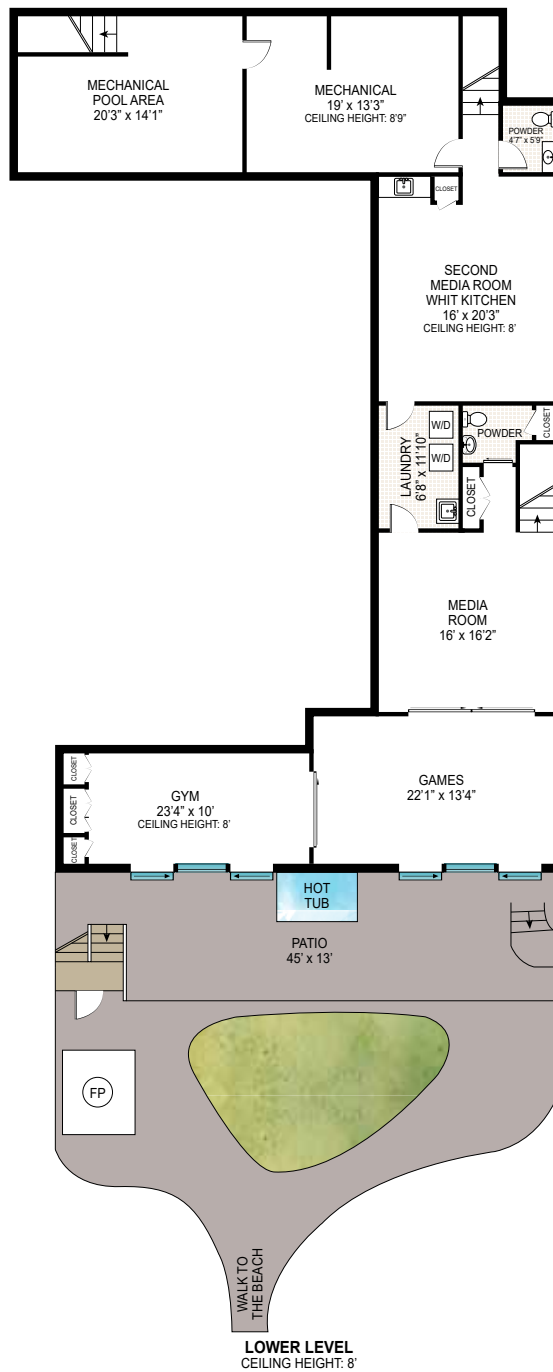
SECOND FLOOR
CEILING HEIGHT: 10'

SECOND FLOOR INT: 1369 SQFT
SECOND FLOOR OUT: 690 SQFT



Scale in feet. Indicative only. Dimensions are approximate. All information contained herein is gathered from sources we believe to be reliable. However, we cannot guarantee its accuracy and interested persons should rely on their own inquiries.

36 Bay Inlet Road, East Hampton



LOWER LEVEL: 1831 SQFT



Scale in feet. Indicative only. Dimensions are approximate. All information contained herein is gathered from sources we believe to be reliable. However, we cannot guarantee its accuracy and interested persons should rely on their own inquiries.

36 Bay Inlet Road, East Hampton

Sotheby's
INTERNATIONAL REALTY